

Model Number:  
**2OACH6012**

**OceanAire**

PROVIDING A BETTER CLIMATE ANYWHERE.



**HEATING &  
COOLING**



## 5 Ton Deluxe Portable Heat Pump

### Product Features:

- Solid State Electronic Controller
- Automatic Mode Changeover
- Manual or Auto 6-Speed Fan Control
- Large LED Display
- Swivel Ball Bearing Casters with Locking Fronts
- Condensate Overflow Alert
- High Pressure Safety Switch
- Washable Electrostatic Air Filters

### Technical Specifications:

Specifications subject to change without notice

Cooling Capacity:	60,100 BTUH
Heating Capacity:	53,500 BTUH
Voltage:	208-230V, 60Hz, 1PH
Amps:	32
Total Watts:	6000
Cooling Ambient:	Operating Range *65° to 105° *55° with additional hot gas bypass valve installed
Heating Ambient:	Operating Range 40° to 85°
Outdoor Use:	No
Cooling Capacity:	Total BTUH at 80°DB/67°WB Return Air 95°F Outdoor at High Fan Speed.
Heating Capacity:	Total BTUH at 70°DB/60°WB Indoor, 47°DB/43°WB Outdoor
In Rush Amps:	178
Plug Type:	6-50P
EER:	10.0
<b>NOTE:</b> Dedicated circuit and time delay fuses / circuit breakers are recommended.	
Compressor:	Scroll
Compressor HP:	5
Compressor LRA:	158
EVAP CFM - High:	1950
EVAP Motor HP:	1
COND CFM:	2200
COND MOTOR HP:	1
Condensate Removal:	Pump Automatic 20' Vertical Lift
Refrigerant Charge:	80 oz R-410A
Height:	54.2"
Width:	28.2"
Depth:	41.0"
Net Weight:	485 lbs.

847.583.0311  
oceanaire-inc.com

PROUDLY MADE IN THE  
**USA**

Accessories for:  
**2OACH6012**

**OceanAire**

PROVIDING A BETTER CLIMATE ANYWHERE.

### Optional Accessories



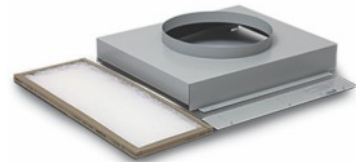
#### Ceiling Panel Kit

For discharging the condenser air above a drop ceiling  
Part Number: CK-16



#### Nozzle Kit/ 2 x 8"

For directional cooling  
Part Number: 2NK-3



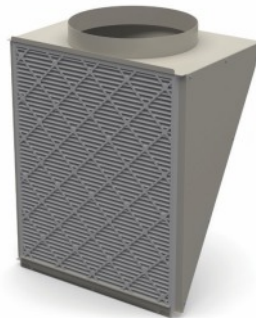
#### Evaporator Return Air Plenum

For ducting return air  
Part Number: DEP-16



#### Discharge Duct Adapter

For extended duct length  
Part Number: 2DDA-16



#### Condenser Return Air Plenum

For installations where it is required to duct air to the inlet of the condenser.  
Part Number: DCP-5

**OceanAire**  
PROVIDING A BETTER CLIMATE ANYWHERE.

**OceanAire, Inc.**  
1731 Wall Street, Suite 100  
Mount Prospect, Illinois 60056

OA-TS-2OACH6012-120124

**847.583.0311**  
oceanaire-inc.com

PROUDLY MADE IN THE  
**USA**